



INTERNA-LIGHT™ ILLUMINATED RAILING

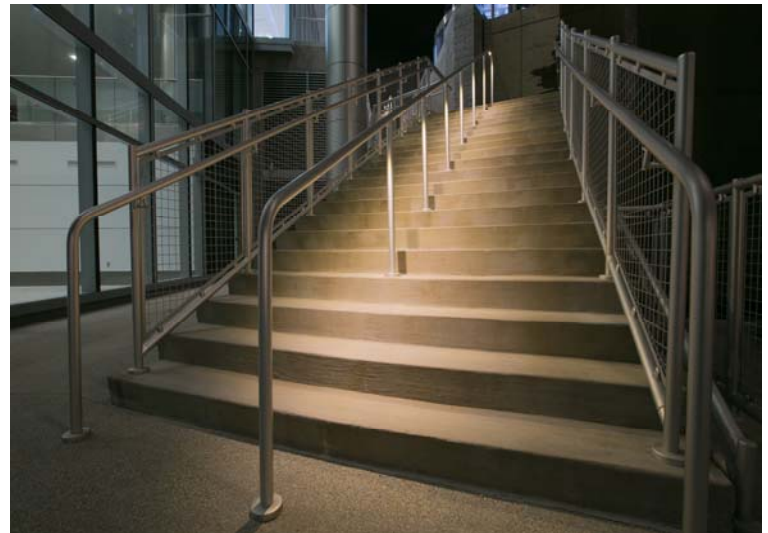
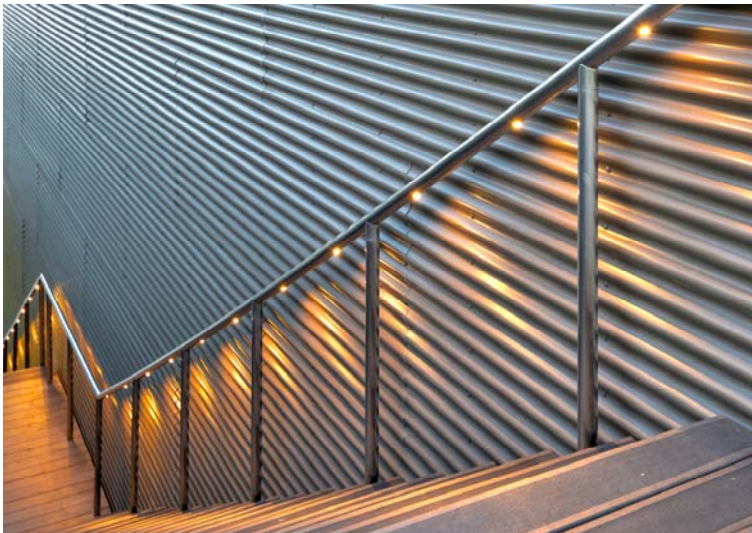
PRODUCT DATA SHEET

Hollaender's new Interna-Light™ railing system uses LED fixtures (LEDpod™) to produce point source lighting that meets decorative or IBC egress lighting codes, as required in all states. PE stamped calcs and/or drawings available at an additional charge.

RAILING FEATURES:

Interna-Light™ can be used with any of our standard non-welded railing designs.

- Interna-Rail® aluminum railing with metal or glass infill panels.
- Interna-Rail® VUE aluminum railing with glass or acrylic panels.
- Speed-Rail® aluminum railing with metal or glass infill panels.
- Stainless steel or aluminum wall rail and handrails.



LIGHTING FEATURES:

- Simple LED fixtures spaced on average every 2 ft. on center produce point source lighting.
 - Note: Specific LED spacing depends on railing design and layout, will be part of approval drawing process.
- LED fixtures can be placed either in the top rail of a railing system or in a separate or stand along handrail/grabrail.
- All lights are low voltage, run by transformers placed close to the entry location at the post.
- LED POD lens are polycarbonate, 4,000k (Natural White) is standard, 3,000k (Warm White) and 5,000k (Cool White) available at no extra charge.
 - * LED life is 50,000 hours, ETL and cETL listed for wet locations
 - * Lumens per LED Pod:
 - ◆ 3,000K – 145 lumens per Pod
 - ◆ 4,000K – 154 lumens per Pod
 - ◆ 5,000K – 176 lumens per Pod
 - * Lens options – Transparent (standard) and Matte (special order)
 - * Lighting Levels: (delivered lumens)
 - ◆ At 42 in. high (height of guardrail), at 4 ft. from centerline of railing—6.2 ft. candles
 - ◆ At 36 in. high (height of railing), at 4 ft. from centerline of railing—5.1 ft. candles
- Tamper Resistant
- Indoor or Outdoor Use

ELECTRICAL FEATURES:

- Power consumption: Standard output 1 watts/ft. based on LED spacing of 2 ft. c-c. Voltage – 24v DC supplied by a Class 2, 100 watt driver housed in a NEMA 3R enclosure
 - * Input – 100 – 277v AC



Interna-Light™ with VUE Glass Infill Panel Railing

